



The EU Alert and Cooperation Network: in (need of re-)shape?

Conference on “Global commodity chains from a risk
assessment perspective”

28 May 2024

*Jan Baele
DG SANTE RASFF team*

RASFF? iRASFF?

A short tour...

iRASFF

Online platform for real time and interactive **collection and sharing of information on agri-food non-compliances, hazards, risks, products and measures taken**

The screenshot displays the iRASFF web application interface. At the top right, there are action buttons: Check (with a downward arrow), Validate (with a green checkmark), Delete (with a red minus sign), Close (with a red X), and Save. The main content is divided into two panels: 'General information' on the left and 'Risk' on the right.

General information

AAO/RASFF number	564059
Reference	
Current Status	New
Notification type *	[select one value] v
Notification basis *	[select one value] v
Notification classification *	[select one value] v
Notifying country	European Commission
Notifying organization	European Commission
Date of notification *	05/08/2022
Subject *	
INFOSAN (to be) informed	<input type="checkbox"/>
Reason INFOSAN	
eCommerce related	<input type="checkbox"/>
Mutual recognition	<input type="checkbox"/>

Risk

Risk decision	[select one value] v
Impact on	[select one value] v
Motivate risk decision	
Number of persons affected	
Type of illness/symptoms	
Hazards observed	
EU legislation	
Reference	
Title	

iRASFF networks

Current iRASFF networks:

- **RASFF** Rapid Alert System for Food and Feed
- **AAC** Administrative Assistance and Cooperation (integrated with RASFF since 2020)
- **FFN** Agri-Food Fraud Network: added to iRASFF in 2021
- **PHN** Plant Health Network: added to iRASFF as from 1st August 2022

Future additional networks: Animal Health Network, Animal Welfare Network....

Notifications in iRASFF

- **RASFF notifications:** relate to a risk to human health deriving from food, food contact material or feed or a serious risk to animal health and to the environment derived from feed.

e.g. 2022.4524 *Aflatoxins (B1 = 14.5; Tot. = 15.2 µg/kg - ppb) in dried figs from Turkey*

- **Non-compliance notifications:** are made in case of a possible non-compliance of an agri-food product with the rules covered by the Official Controls Regulation (EU) 2017/625.

e.g. AA22.2525 *Unauthorized use of E110 in breakfast cereals*

Notifications in iRASFF

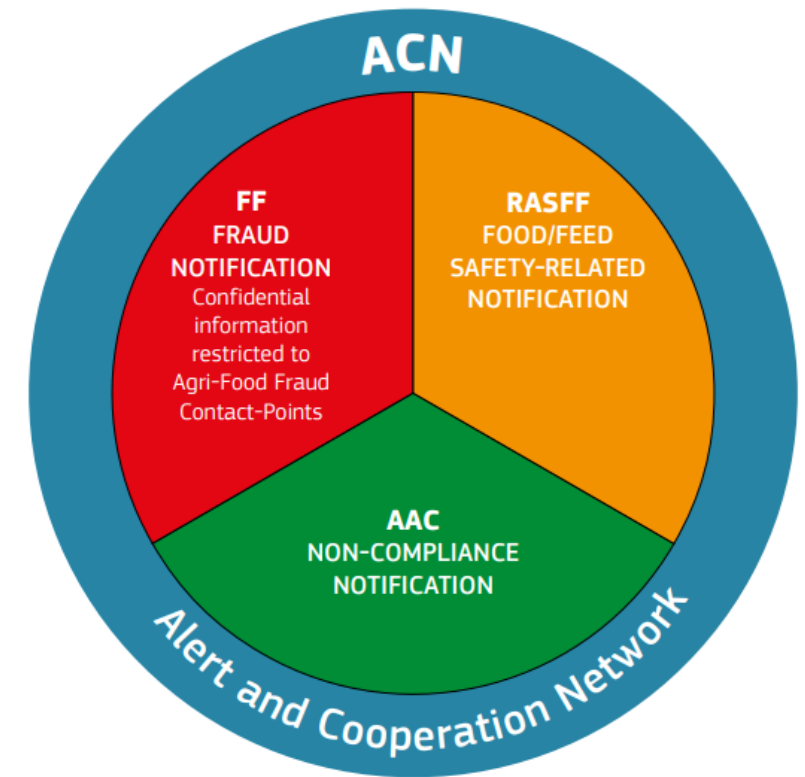
- **Fraud notifications:** are made when a fraud is suspected, implying an intentional action by businesses or individuals for the purpose of making an economic gain.
e.g. FF22.4074 Suspicion of fraudulent EU pet passport for dog from Serbia
- **Plant health notifications:** are non-compliance notifications about plants, plant products and other objects regarding phytosanitary rules
e.g. PH22.7433 – absence of plant passport

iRASFF system

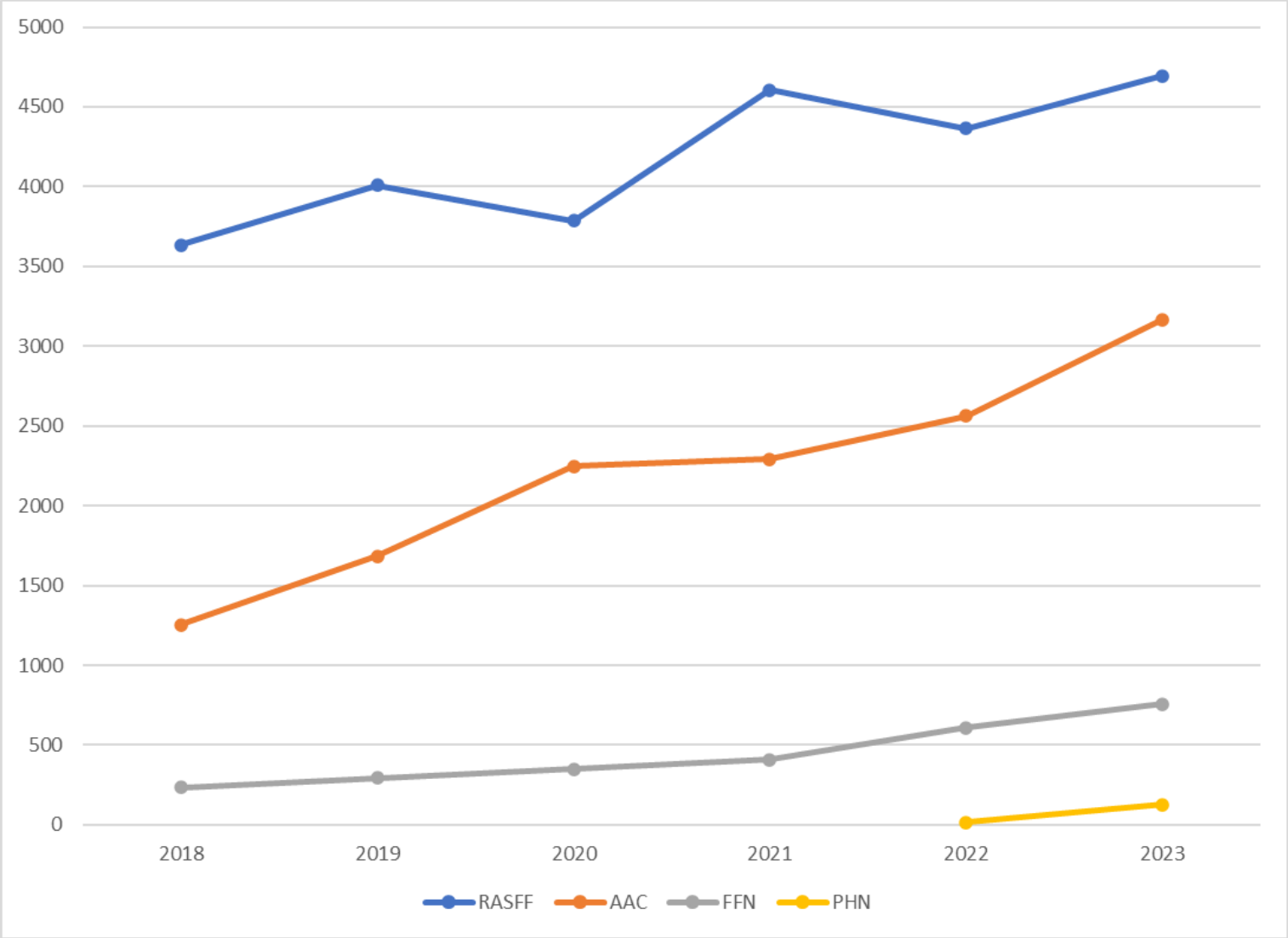
- **Each network focuses on its own notifications** and can only make workflow actions on its own network. A user can however be member of multiple networks.
- A notification shared between members is transparent to other networks and **available for cooperation in these other networks**, except for fraud notifications that are accessible only to FFN members.
- Notification **template** and master data **catalogues** are **specific for each network**.
- **Food fraud elements can be added to non-FF notifications** by way of FF-follow-up by food fraud users. They are accessible only to food fraud users.

The Alert and Cooperation Network (ACN)

- Composed of the Rapid Alert System for Food and Feed network (**RASFF**), the Administrative Assistance and Cooperation system network (**AAC**) and the Agri-Food Fraud Network (**FFN**)
- The three networks work together to allow a smooth **exchange of information** between Members States' competent authorities and to facilitate **cooperation** among them.
- Clearly identified **single contact points** for the ACN
- In case of an urgent RASFF notification outside office hours all members have **out-of-hours arrangements** (24/7)

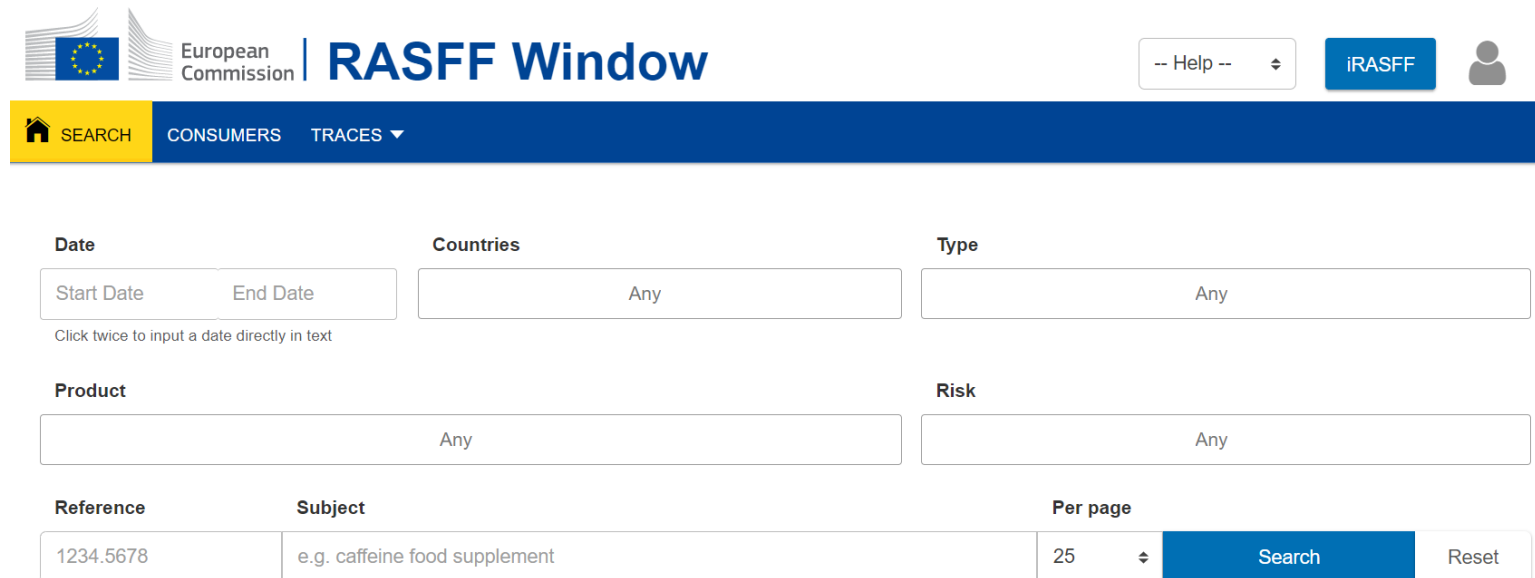


Alert and Cooperation Network Notifications 2018-2023



Alert and Cooperation Network RASFF Window

- **RASFF Window:** tool to distribute RASFF notifications real-time "outside the system": to member and non-member competent authorities all over the world, including INFOSAN Secretariat
- **RASFF Window (public):** provides real-time information on RASFF notifications to the general public and stakeholders
- **RASFF Window “Consumers“:** provides the latest information on food recalls and public health warnings in all EU countries, related to RASFF notifications



The screenshot shows the RASFF Window search interface. At the top, there is the European Commission logo and the text "RASFF Window". To the right, there is a "-- Help --" dropdown menu, a blue "iRASFF" button, and a user profile icon. Below this is a navigation bar with a home icon, "SEARCH", "CONSUMERS", and "TRACES" with a dropdown arrow. The main search area contains several input fields: "Date" with "Start Date" and "End Date" sub-fields, "Countries" with "Any", "Type" with "Any", "Product" with "Any", and "Risk" with "Any". Below these is a table with columns "Reference" and "Subject". The "Reference" column contains the value "1234.5678" and the "Subject" column contains "e.g. caffeine food supplement". To the right of the table is a "Per page" dropdown menu set to "25", a blue "Search" button, and a "Reset" button. At the bottom right, there is the European Commission logo and the text "European Commission".

Date	Countries	Type
Start Date End Date	Any	Any

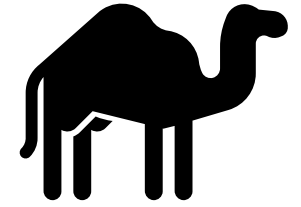
Click twice to input a date directly in text

Product	Risk
Any	Any

Reference	Subject	Per page	Search	Reset
1234.5678	e.g. caffeine food supplement	25	Search	Reset

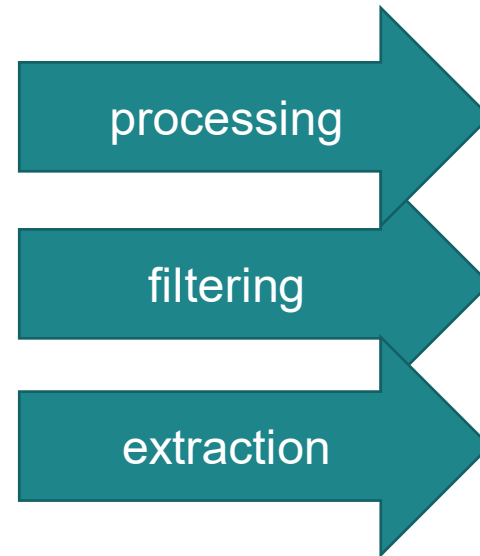
It's the data, stupid!

Thirst for data



Data sources

- Raw data (spreadsheets etc.)
- Data from other systems
- Data from documents
- Data from media



Usable data

- Structured data
- Data placed in a certain context
- Data “with a manual”

Data model

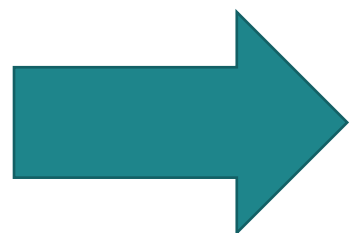


completeness

- sufficiently detailed to keep track of progress of incident mitigation
- analysing a big collection of data for the purpose of finding “hotspots”

compatibility

- importing data collected through other systems including common traceability standards
- analysing with powerful external tools focused on traceability solutions



Need for common standards

Opportunities

What do we want to get out of it?

What do we want to get out of it?

Cooperate



- Manage incidents as rapidly and efficiently as possible
- Find cause of an incident
- Find connections between incidents pointing to a larger event taking place and handle such events before they develop into a crisis

What do we want to get out of it?

Communicate



- Share knowledge across authorities and with trade partners
- Inform the public more rapidly and more accurately while providing more context too

What do we want to get out of it?

Analyse



- Learn from past incident occurrences and mitigations
- Advise (priorities for) official controls
- Be able to predict certain events or trends

iRASFF the next generation

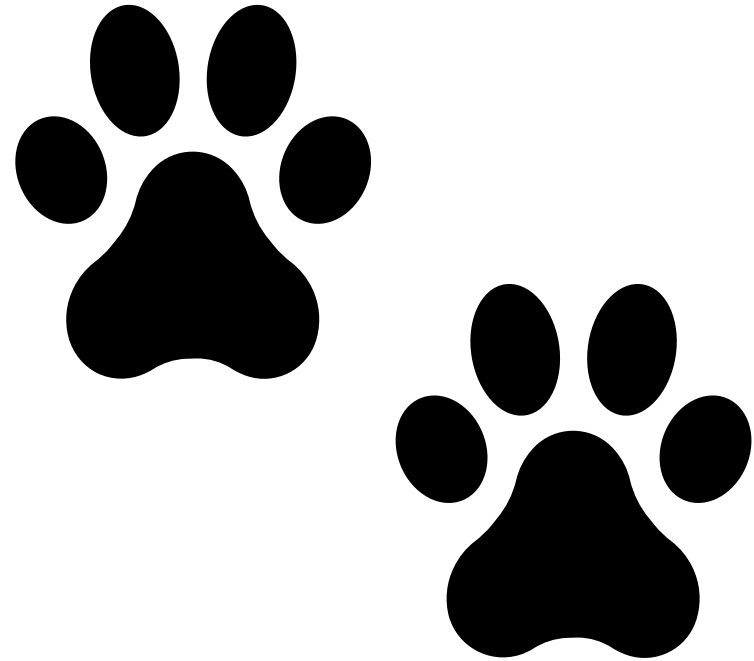
What do we want from the next iRASFF?

New iRASFF

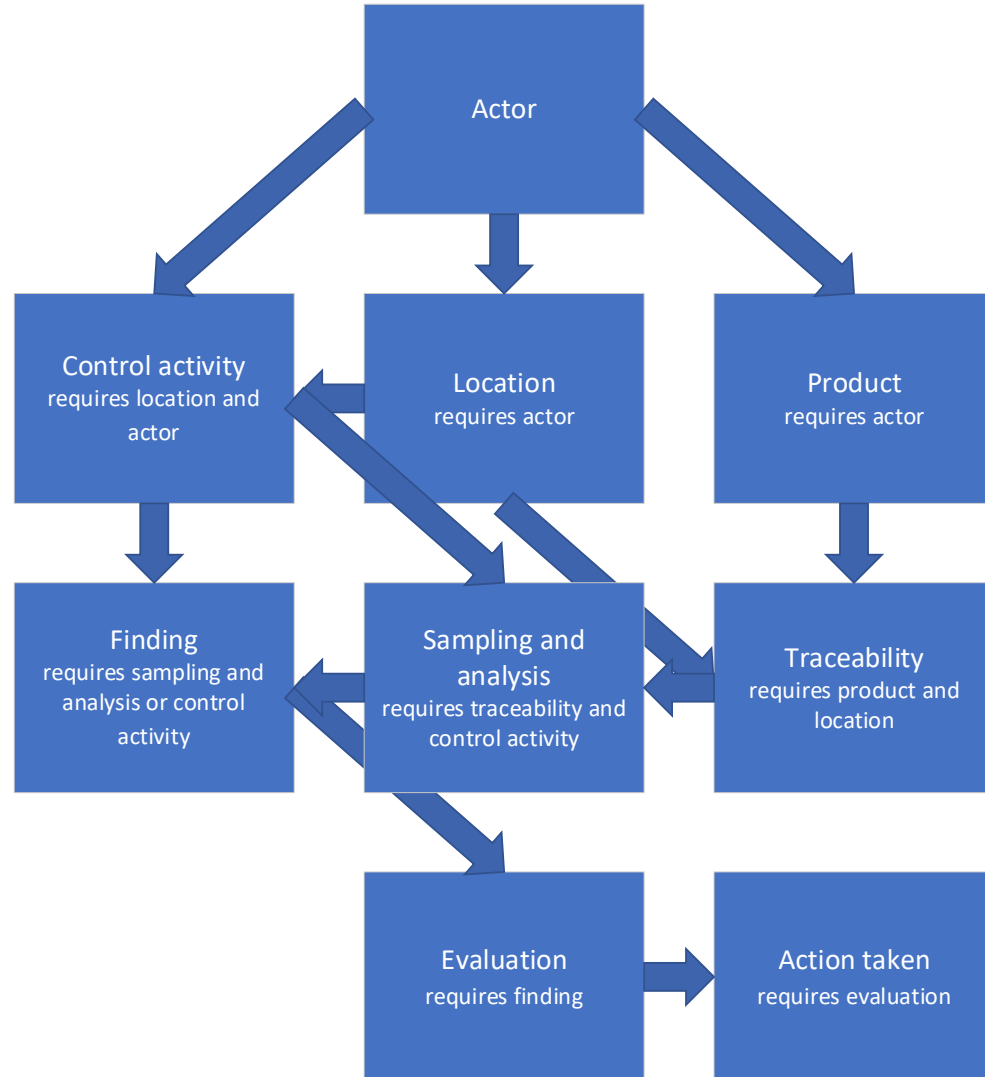
- New iRASFF should better ensure scalability and **performance**, exchange of information with other networks and with stakeholders and state of the art techniques for data analysis
- Better **linking with other applications** (foremost TRACES)
- Improvements in **data collection and analysis** on product composition, hazards and traceability (allowing analysis of trends)
- Ensuring **interoperability with EFSA systems and standards** in order to create a shared knowledge base (Standard Sample Description, FoodEx2), for this a mandate has been agreed with EFSA
- Improving **collaboration** with non-member countries, international organisations and stakeholders

Traceability solution

- At the heart of iRASFF NT
- Who, when, where, what and how
- Product > lot > consignment
- Trace quantity of product
 - Produced or traded
 - withdrawn



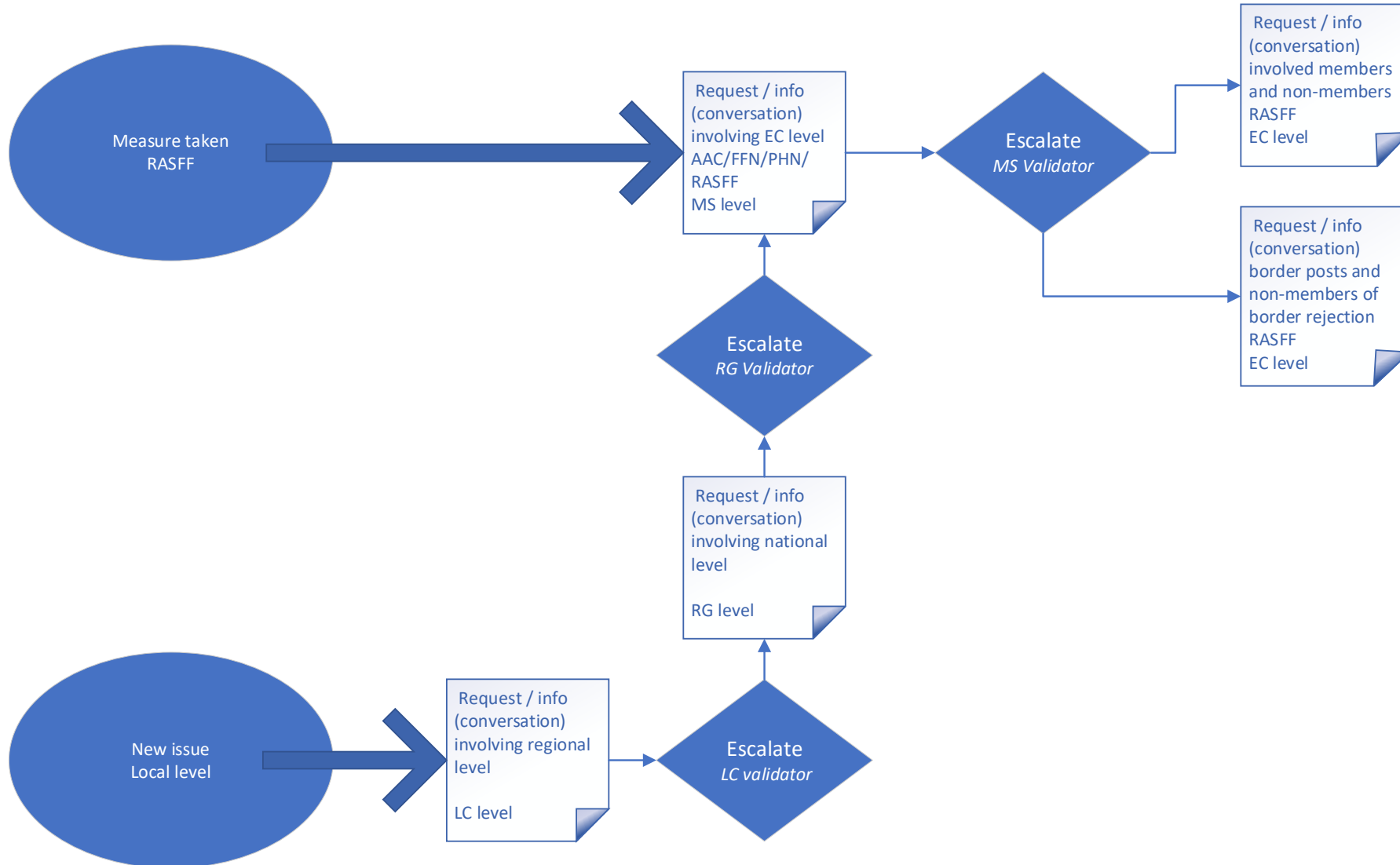
Data block types and links



Important for certain data blocks to be uniquely identified in the system:

- Actors
- Products
 - Lots
- Consignments

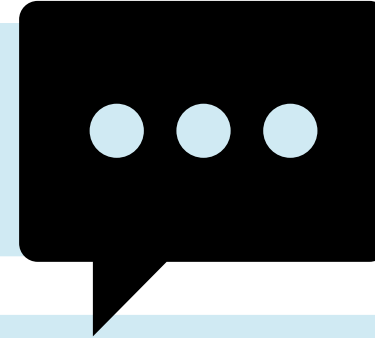
Notification flow through conversations



Networks



data blocks available to all networks



Multiple networks join in conversation and cooperate



Open to non-members

Questions?



© European Union 2020

Unless otherwise noted the reuse of this presentation is authorised under the [CC BY 4.0](https://creativecommons.org/licenses/by/4.0/) license. For any use or reproduction of elements that are not owned by the EU, permission may need to be sought directly from the respective right holders.

Slide xx: [element concerned](#), source: [e.g. Fotolia.com](#); Slide xx: [element concerned](#), source: [e.g. iStock.com](#)

